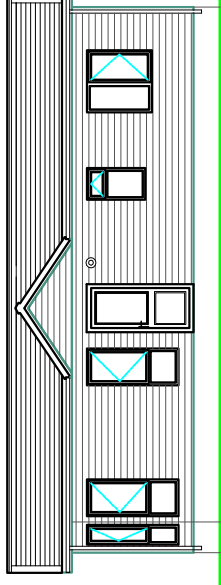
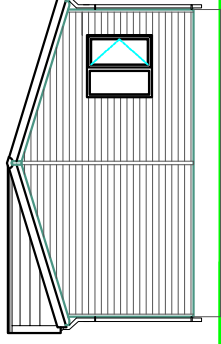


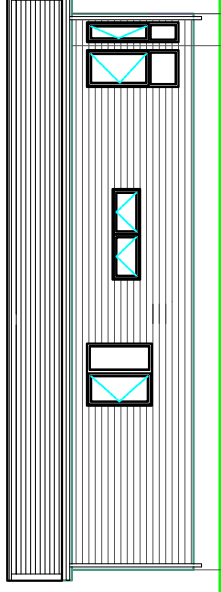
Front End Elevation



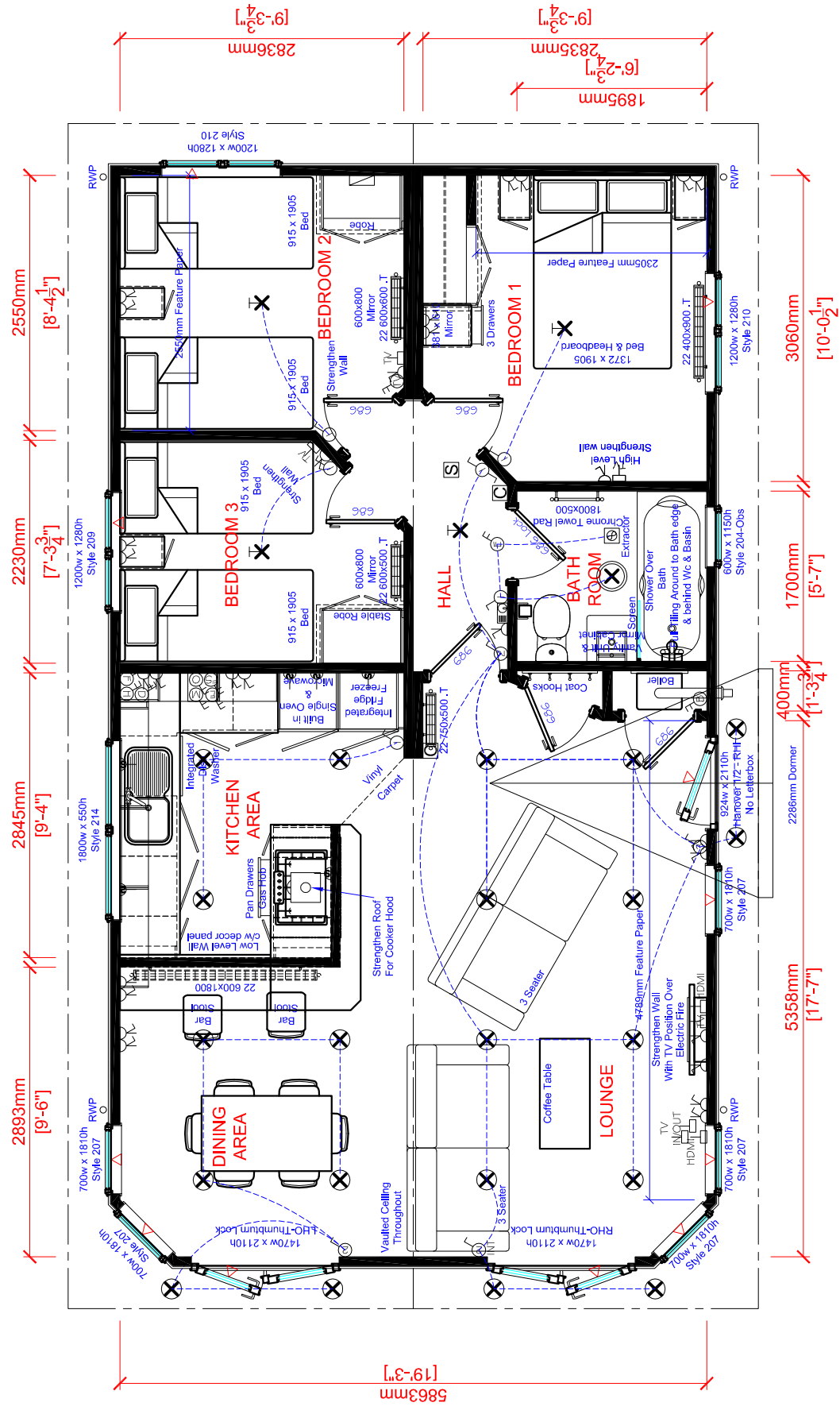
Near Side Elevation



Back End Elevation



Off Side Elevation



**LEGEND:**

| Symbol | Item Name                | Symbol | Item Name                |
|--------|--------------------------|--------|--------------------------|
| ⚡      | SINGLE POWER SOCKET      | ☎      | PHONE POINT              |
| ⚡⚡     | DOUBLE POWER SOCKET      | ☎      | SMOKE ALARM              |
| 🌡      | ROOM THERMOSTAT          | ☑      | CARBON MONOXIDE DETECTOR |
| TV/DMI | TV/DMI POINT             | ⚡      | CONSUMER UNIT            |
| ⚡      | FUSED SPUR               | ⚡      | PENDANT LIGHT            |
| ♂      | SINGLE GANG LIGHT SWITCH | ☉      | GLOBE LIGHT              |
| ♂      | DOUBLE GANG LIGHT SWITCH | 🔦      | UNDER LOCKER LIGHT       |
| ☑      | CEILING EXTRACTOR        | ☒      | SPOTLIGHT                |
| 🔧      | WALL EXTRACTOR           | ☒      | EXTERNAL TAP             |

**TYPICAL OVERALL TRANSPORT DIMENSIONS**

| Size                | Height               | Width                |
|---------------------|----------------------|----------------------|
| 3.050m (10') Single | 3.822m (12' 6 1/2")  | 3.694m (12' 1 1/2")  |
| 3.645m (12') Single | 3.913m (12' 10 1/2") | 4.289m (14' 1")      |
| 4.267m (14') Single | 4.008m (13' 2")      | 4.767m (15' 7 3/4")  |
| 4.876m (16') Twin   | 4.101m (13' 5 1/2")  | 3.039m (9' 11 1/4")  |
| 5.486m (18') Twin   | 4.194m (13' 9 1/4")  | 3.344m (10' 11 3/4") |
| 6.030m (20') Twin   | 4.277m (14')         | 3.616m (11' 10 1/2") |
| 6.650m (22') Twin   | 4.366m (14' 3 1/2")  | 3.926m (12' 10 3/4") |

Please check with your transport company before arranging to collect your home

The above is a typical guide actual home may vary depending on your specification e.g. adding bay windows etc. If you are unsure, or access to your park is tight, please check with us and your transport company before placing your order.



Approved by customer:

Date:

This drawing and the information it contains are the property of Homeseeker Park & Leisure Homes. It is not to be copied, reproduced, or divulged to a third party without permission in writing.

|  |   |
|--|---|
| Shipton Way<br>Express Business Park<br>Rushden, Northants<br>NN10 6GL | Tel: 0845 070 2345<br>Fax: 01933 354047<br>sales@homeseekershomes.co.uk<br>www.homeseekershomes.co.uk |
| 10.973m x 6.030m (36' x 20')   |   |
| Navigators Lodge 3BH   |   |
| 2014 Homeseeker Park & Leisure Homes                                   |   |
| Date:  | Code: 14_14   |
| Scale: Plan 1:50   | Dwg No:   |
| Drawn:   | Quote No:   |
| Stds: BS 3632  | Serial No:  |