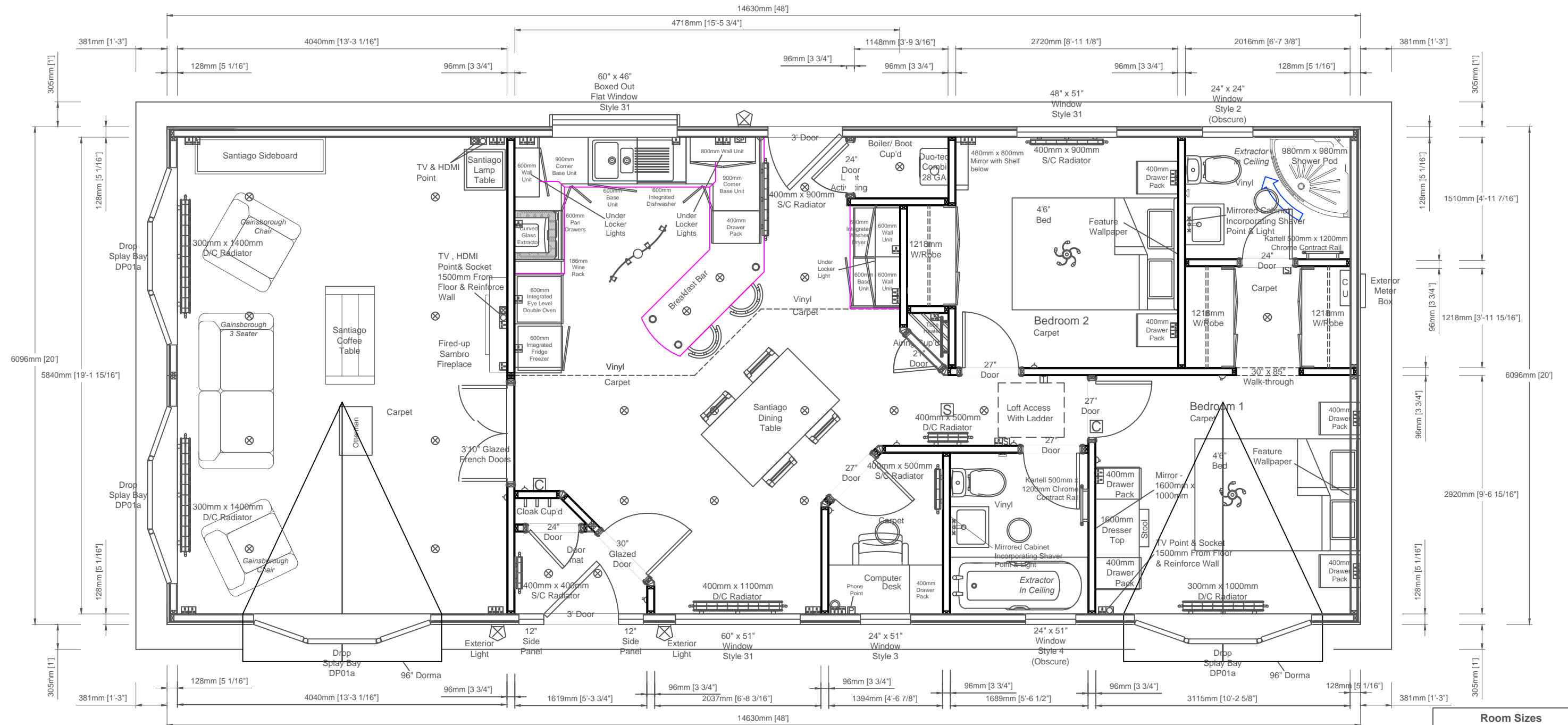


Elevations are for illustrative purposes only.



Room Sizes		
Rooms	Length	Width
Lounge	13'3"	19'2"
Kitchen	15'6"	9'7"
Diner	15'6"	12'6"
Bathroom	5'7"	6'7"
Ensuite	6'7"	5'2"
Study	4'7"	6'7"
Bedroom 1	10'3"	9'7"
Bedroom 2	8'11"	9'5"



Anthem - 48' x 20' (14.63m x 6.09m)
2 Double Bedroom En-Suite

Customers Signature;

Date;

Date:	TBA	This home is designed in accordance with BS3632	
Scale:	Relative	Legend	
Drawn:	N/A	△	Light Switch
Code:	TBA	○	Pull Card Switch
Dwg No:	TBA	⊥	Batten Holder
Serial No:	TBA	⊙	Globe Light
		⊗	Exterior Light
		⊛	Downlight
		⊞	Single Socket
		⊞⊞	Double Socket
		⊞⊞⊞	Spur Socket
		⊞⊞⊞⊞	Switching Plate
		⊕	Exterior Tap
		⊞	TV Point
		⊞	Phone Point
		⊞	HDMI Point
		⊞	Thermostat
		⊞	CO ₂ Alarm
		⊞	Smoke Alarm
		⊞	Radiator
		⊞	Consumer Unit
		⊞	Exterior Meter Box

Rev	Date	By	Description

Notes;

Shipton Way, Express Business Park, Rushden, Northants NN10 6GL
Tel: 0845 0702345 / 01933 354000 Fax: 01933 354047 / 01933 354049
Email: sales@prestigeparkandleisurehomes.com
Visit our website: www.prestigeparkandleisurehomes.com

This plan is a guide and should be used for illustrative purposes only